

## **Packing instructions for the Clearview 17" TFT and 22" TFT**

1. Disconnect wire connections at back of unit.



2. Place finger inside base, gently pull out on tab and then remove neck and monitor assembly out of base.



*seepac.com*

3. Use packing material to protect monitor and place in box.





*seepac.com*





*seepac.com*



*seepac.com*

4. Then pack up base of unit.

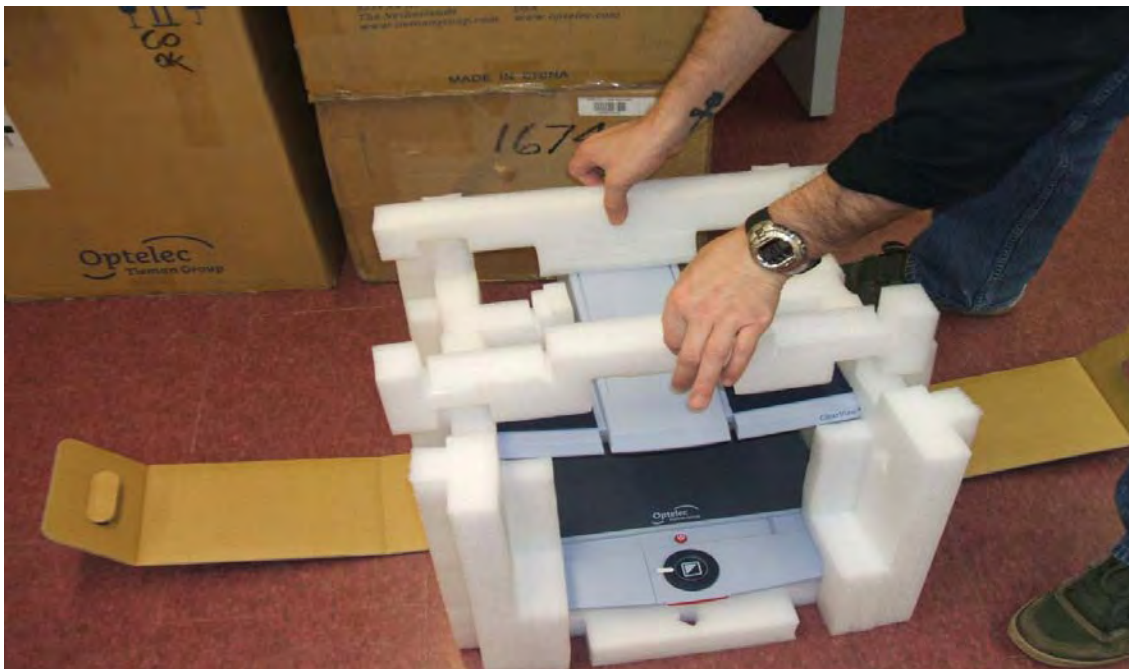




*seepac.com*



5. Insert top pieces of packing and lift base by handles into box.



*seepac.com*



6. Pack accessories box and instructions before closing box.

