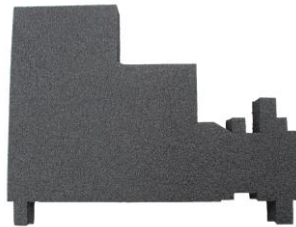


# CVC Packing Instructions

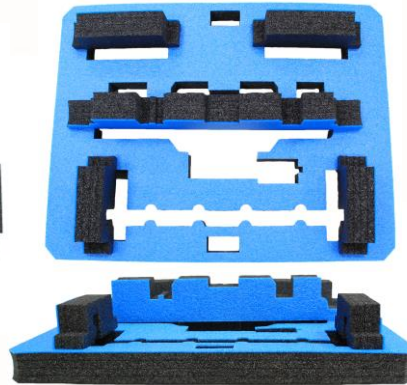
## Included Foam Pieces:



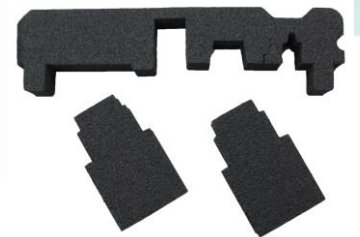
**Bottom Piece** (top view and front view shown)



**Center Supports (2x)**



**Top Piece** (top view and front view shown)



**Top Support and Monitor Side Supports (2x)**

## Also Included (not pictured):

- 2x flat cardboard inserts
- 1x Warranty and User Manual packet

**Please Note:** When repacking the CVC, do not use foam from different models of the CVC. Some of the foam pieces have various tear-offs that are removed depending on the model of the CVC to fit the various screen sizes, etc. Also note that each box has a serial number on the outside that matches the serial number of the CVC. When repacking, use the same box so the serial numbers match.

## Steps:

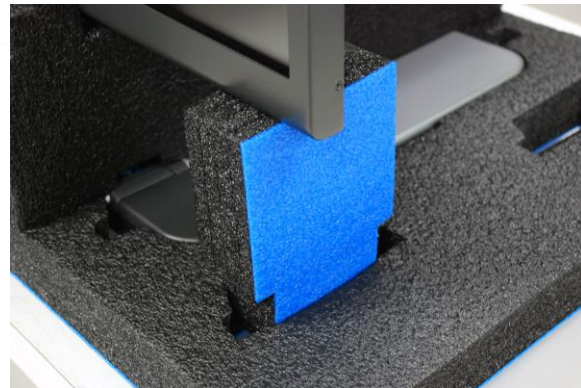
1. Place the Bottom Piece on a flat surface
2. Place the CVC in the bottom foam and ensure it fits snug. Take caution that the X/Y Tray can get caught on the foam – be sure the tray is fully inside the foam inset and not resting on top of it.



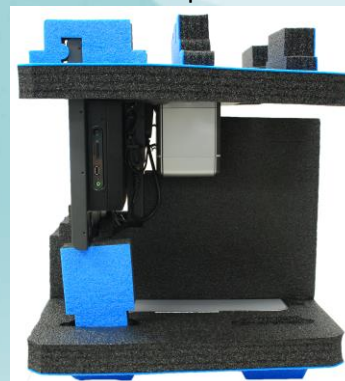
3. Lift the monitor up as far as it will go and place both Center Supports underneath the EB and monitor. Each Center Support has a tongue that fits into the slot on the Bottom Piece at the front and back.



4. Place the two Monitor Side Supports into their slots on the left and right of the Center Supports. Push the monitor all the way down so it rests in the slot in the Center Supports and on top of the Monitor Side Supports.



5. At this point, we recommend placing the whole assembly into the box before adding the rest of the foam. (The following steps and photos will show the assembly out of the box for clarification.)
6. Place the Top Piece over the CVC and press down so the top of the monitor fits into its slot.

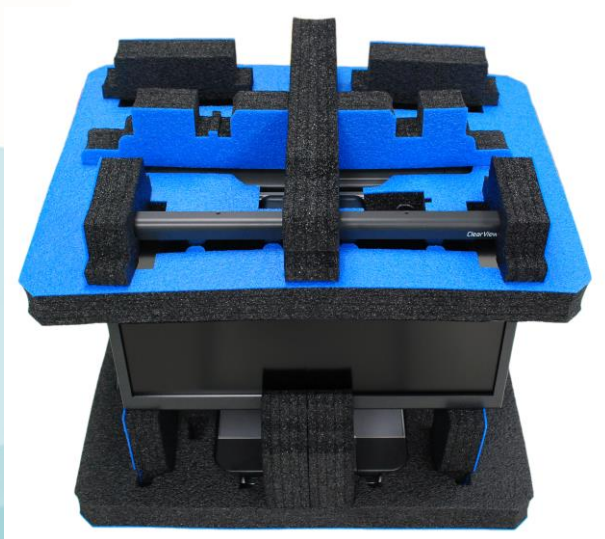


7. Place the Top Support over the Top Piece. The Top Support has a tongue that fits into the slot at the front and back of the Top Piece.

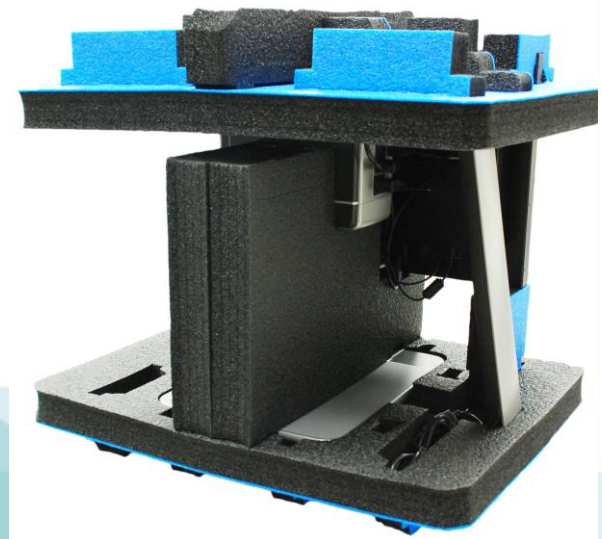


8. Place the User Manual and Warranty Packet on top of the assembly and place the flat cardboard insert on top of that. Close and seal the box with packing tape.

**Finished Packing:**



Front/Top View



Back View